



Canotta

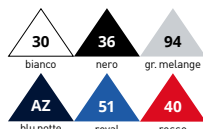
Cod. 610980

Tessuto: **100% cotone***,
***Grigio Melange: 97% cotone, 3% poliestere**

- Bordo su collo e giromanica dello stesso tessuto del corpo
- Tessitura compatta per una migliore stampabilità

approx. 3%	S	M	L	XL	2XL
Larghezza	46	48.5	53.5	56	58.5
Lunghezza	68	70	72	74	76

Peso approx.: **160 gr/m²** Bianco
165 gr/m² Colorato
Imballo: **12 pz**
Cartone: **72 pz**



Canotta Lady Fit

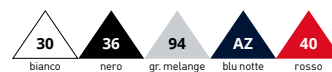
Cod. 613760

Tessuto: **100% cotone***
***Grigio Melange: 97% cotone, 3% poliestere**

- Bordo su collo e giromanica dello stesso tessuto del corpo
- Tessitura compatta per una migliore stampabilità
- Cuciture laterali sciancrate

approx. 3%	XS	S	M	L	XL	*2XL
Larghezza	38.5	41	43.5	46	48.5	51
Lunghezza	62	63	64	65	66	67

Peso approx.: **160 gr/m²** Bianco
165 gr/m² Colorato
Imballo: **12 pz**
Cartone: **72 pz**



2XL Disponibile solo nei colori 30, 36



JHK
T-SHIRT



JHK
T-SHIRT



Canotta Urban

Cod. TSUATNK

Tessuto: **100% cotone preristretto**
AS: 98% cotone / 2% viscosa

- Single Jersey
- Doppia cucitura su collo, giromanica e girovita

approx. 3%	S	M	L	XL	2XL
Larghezza	48	51	53	56	58
Lunghezza	70	72	74	76	80



Peso approx.: **150-155 gr/m²**
Imballo: **10 pz**
Cartone: **50 pz**

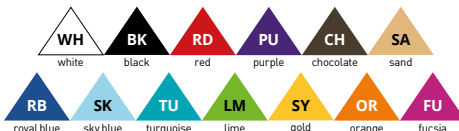
Canotta Aruba

Cod. TSULARB

Tessuto: **100% cotone cardato**

- Canotta donna con taglio vogatore sul retro
- Costina 1x1

approx. 3%	XS	S	M	L	XL
Larghezza	36	38	40	42	44
Lunghezza	59	61	63	65	67



Peso approx.: **200 gr/m²**
Imballo: **10 pz**
Cartone: **50 pz**

Canotta Ibiza

Cod. TSULIBZ

Tessuto: **100% cotone**
Fluor Colors: 100% poliestere cotton touch

- Canotta con spalline e ampia scollatura.

approx. 3%	S/M	L/XL
Larghezza	54	56
Lunghezza	46	48



Peso approx.: **120 gr/m²**
Imballo: **10 pz**
Cartone: **50 pz**

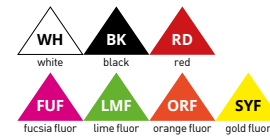
JHK
T-SHIRTETICHETTA
RIMOVIBILE

Urban Beach Unisex

Cod. **TSUALBCH**Tessuto: **100% cotone, 100% poliestere (fluor colors)**
• Canotta sportiva taglio vogatore Unisexapprox. 3% **XS S M L XL**

Larghezza 48 50 52 54 56

Lunghezza 70 72 74 76 78

Peso approx.: **150 gr/m² Bianco - 155 gr/m² Colorato**Imballo: **10 pz**Cartone: **50 pz**ETICHETTA
RIMOVIBILEJHK
T-SHIRT

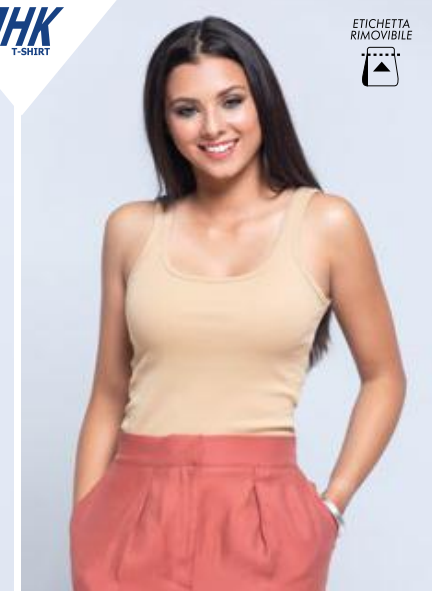
Canotta Martinica

Cod. **TSULMRTNC**Tessuto: **100% cotone**• Canotta con spalline e ampia scollatura.
• Tessuto Single Jerseyapprox. 3% **S/M L/XL** Peso approx.: **120 gr/m²**
Larghezza 38 41 Imballo: **10 pz**
Lunghezza 69 71 Cartone: **50 pz**ETICHETTA
RIMOVIBILE

Canotta Paradise

Cod. **TSULPRDS**Tessuto: **100% cotone***Grey Melange: **85% cotone, 15% viscosa**

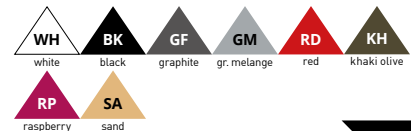
• Canotta donna con taglio vogatore sul retro

approx. 3% **S M L XL** Peso approx.: **120 gr/m²**
Larghezza 44 46 48 50 Imballo: **10 pz**
Lunghezza 62 64 66 68 Cartone: **50 pz**JHK
T-SHIRTETICHETTA
RIMOVIBILE

Canotta Victoria

Cod. **TSULVCTR**Tessuto: **100% cotone cardato***Grey Melange: **85% cotone, 15% viscosa**

• Canotta donna con spalline strette. • Costina 1X1

approx. 3% **S M L XL** Peso approx.: **160 gr/m²**
Larghezza 30 34 38 42 Imballo: **10 pz**
Lunghezza 65 67 69 71 Cartone: **50 pz**

GILDAN®

Soft Style™



MAN

GL64200



Soft Style™ canottiera

100% Cotone Deluxe 30/1 pettinato
Ring Spun Soft
140 gr/m² bianco
150 gr/m² colorato

30 White	36 Black	42 Charcoal
32 Navy	40 Red	295 Sport Grey

Colore Sport Grey: 10% Poliestere

S-XXL	36 Pz	12 Pz
S	M	L XL XXL
↔ 46	51 56 61 66	
↑ 70	73 75.5 78 81.5	

WOMAN

GL64200L



Soft Style™ donna canottiera

100% Cotone Deluxe 30/1 pettinato
Ring Spun Soft
140 gr/m² bianco - 150 gr/m² colorato
Modello sagomato taglio fit
Cuciture laterali

30 White	36 Black
32 Navy	194 Cherry Red

Colore Sport Grey:
10% Poliestere

S-XL	36 Pz	12 Pz
S	M	L XL
↔ 41	43 47 50	
↑ 64	67 69 71	

ANVIL[®]
BY GILDAN

FREEDOM



AN32PVL



Freedom canottiera

65% Poliestere - 35% Viscosa
136 gr/m²
Racer back - Vestibilità loose
Fit svasata
Back longer

30 White	36 Black	792 Dusty Rose
32 Navy	780 Heather Graphite	746 Terracotta

XS-XL	36 Pz	12 Pz
XS S M L XL		
↔ 36 38 41 43 46		
↓ 60 61 64 66 69		

AN37PVL



Freedom maglia scollatura tonda senza manica

65% Poliestere - 35% Viscosa
136 gr/m² - Cuciture laterali
Colletto a costina
Fondo posteriore arrotondato

30 White	36 Black	792 Dusty Rose
32 Navy	780 Heather Graphite	

Heather Graphite:
52% poliestere 48% Viscosa

XS-XL	72 Pz	12 Pz
XS S M L XL		
↔ 41 43 46 48 51		
↓ 58 61 64 66 69		

ANVIL[®]
BY GILDAN

STRETCH



AN2420L



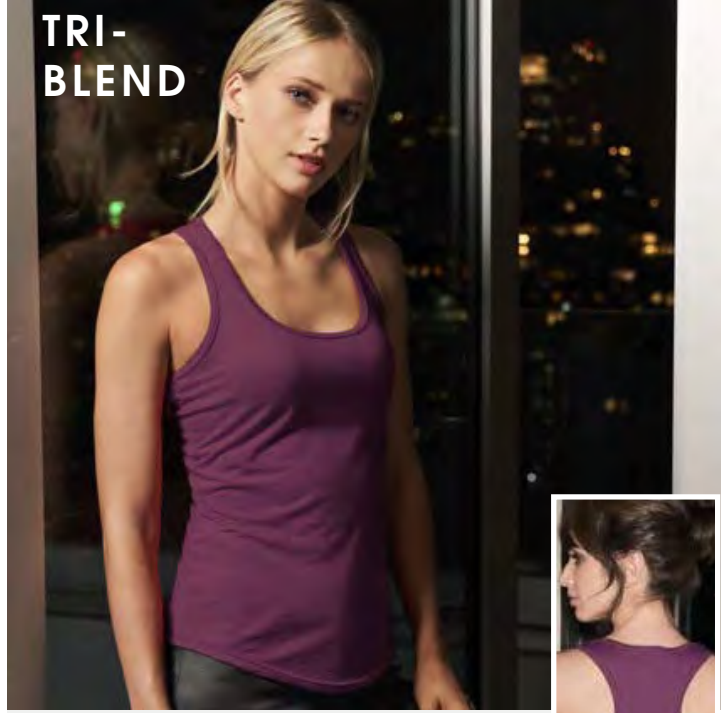
Stretch canottiera

57% Cotone Pettinato Ring Spun
38% poliestere - 5% spandex
146 gr/m²
Taglio sagomato
Vestibilità fitted

30 White	303 City Green	780 Heather Graphite
32 Navy	346 Heather Grey	792 Dusty Rose
36 Black		

XS-XL	36 Pz	12 Pz
XS S M L XL		
↔ 32 34 39 44 50		
↓ 60 61 64 66 69		

**TRI-
BLEND**



AN6751L



**Tri-Blend donna
canottiera racerback**

50% Poliestere - 25% Rayon
25% Cotone pettinato Ring Spun
Tessuto 30/1 - 159 gr/m²
Bordo stondato - Cuciture laterali

30 White	346 Heather Grey
334 Heather Dark Grey	479 Heather Aubergine

XS-XL	36 Pz	12 Pz
XS S M L XL		
↔ 38 41 46 51 56		
↓ 64 65 67 70 72		



VALUEWEIGHT



MAN

F61098



Valuweight canottiera

100% Cotone - 160 gr/m² bianco - 165 gr/m² colorato
Bordino al collo e giromanica



30
Bianco



36
Nero



40
Rosso



94
Grigio Melange



AZ
Blu Notte



51
Royal

Colore Grigio Melange: 3% Poliestere

S-XXL	72 Pz	12 Pz
S	M	L XL XXL
↔ 46	48,5	53,5 56 58,5
↓ 68	70	72 74 76

WOMAN

F61376



Valuweight donna canottiera

100% Cotone - 160 gr/m² bianco - 165 gr/m² colorato
Girocollo e giromanica con fettuccia dello stesso tessuto
Cuciture laterali



30
Bianco



36
Nero



40
Rosso



94
Grigio Melange



AZ
Blu Notte

Colore Grigio Melange: 3% Poliestere

XS-XL	72 Pz	12 Pz
XS S	M	L XL
↔ 38,5	41	43,5 46 48,5
↓ 62	63	64 65 66

T-SHIRT SENZA MANICHE



CLASSIC



MAN

ST2800



Classic canottiera

100% Cotone Ring Spun
150 gr/m² bianco
155 gr/m² colorato



WHI
White



BLO
Black

S-XXL	96 Pz	12 Pz
S M L XL XXL		
↔ 45 48 51 54 57		
↑ 66.5 68.5 70.5 72.5 74.5		

WOMAN

ST2900



Classic donna canottiera

100% Cotone Ring Spun
150 gr/m² bianco
155 gr/m² colorato



WHI
White



BLO
Black

S-XL	96 Pz	12 Pz
S M L XL		
↔ 42 45 48 52		
↑ 61 63 65 67		

ST2810



Tank Top canottiera

100% Cotone Ring Spun
160 gr/m²
Scollo e giromanica bordati
Cuciture laterali - Body Fit
Solo etichetta della taglia al collo
Etichetta di manutenzione asportabile
nella cucitura laterale - Lavabile a 40°



WHI
White



BLO
Black



GYH
Grey Heather

Grey Heather: 15% Viscosa

S-XXL	24Pz	1 Pz
-------	------	------



INSPIRE 100% COTONE ORGANICO



CTM072

MEDIUM FIT NO LABEL



Inspire men canottiera

100% cotone organico
pettinato ring spun
140 gr/m²



Sport Grey: 10% Viscosa

S-XXL	50 Pz	10 Pz
S	M	L XL XXL
↔46	49	52 55 58
↓72	73,5	75 76,5 78



CTW073

MEDIUM FIT NO LABEL



Inspire women canottiera

100% cotone organico pettinato
ring spun
140 gr/m²



Sport Grey: 10% Viscosa

XS-XL	50 Pz	10 Pz
XS	S	M L XL
↔37	40	43 46 49
↓61,5	63,5	65,5 67,5 69,5

ATHLETIC MOVE

CTM200

MEDIUM FIT



Athletic Move canottiera

100% Cotone Ring Spun
145 gr/m² Single Jersey
Taglio Tubolare
Spallina larga
Profiliti con lo stesso tessuto



Colore Sport Grey: 15% Viscosa

M-XXL	100 Pz	10 Pz
M	L	XL XXL
↔49	52	55 58
↓67	70	73 77



EXACT MOVE

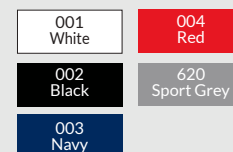
CTM201

MEDIUM FIT



Exact Move maglia girocollo senza manica


100% Cotone Ring Spun
145 gr/m²
Taglio dritto con cuciture laterali
Collo in costina 1/1 con elasthan



Colore Sport Grey: 15% Viscosa

S-XXL	50 Pz	10 Pz
S	M	L XL XXL
↔49	52	55 58 61
↓69	71	73 75 77



 BUILD YOUR BRAND

Mesh Tanktop 100% Poliestere




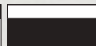
BY009

NO LABEL



Mesh Tanktop canottiera

100% Poliestere
130 gr/m²
Maglia in Mesh
Bordi a coste a 2 colori sull'apertura del braccio e del collo
Cuciture doppie sul fondo
Taglio lungo - Solo etichetta taglia al collo

	
WHTBLK White/Black	BLKWHT Black/White

S-XXL 100 Pz 1 Pz

Loose Tank 100% Cotone



BY020

NO LABEL



Loose Tank women canottiera

100% Cotone
110 gr/m²
Maglia leggera con giromanica profilato
Scollatura ampia con collo rotondo
Cuciture doppie sul fondo
Taglio lungo - Solo etichetta taglia al collo

	
WHT White	HGY Heather Grey
	
BLK Black	CHR Charcoal

Heather Grey: 90% Cotone - 10% Viscosa
Charcoal: 60% Cotone - 40% Poliestere

XS-XL 190 Pz 1 Pz



SLUB

IT679



Canottiera donna fiammata back longer taglio vivo

100% Cotone pettinato Ring Spun
140 gr/m²
Finiture a taglio vivo su collo e giromanica
Cuciture laterali
Lunghezza posteriore maggiore
per un look moderno
Filato slub per un effetto vintage
Etichetta asportabile manualmente

12 Nero	FB2 Smeraldo	MR Corallo
99 Bianco	BS Verde Militare	TI Titanio

S-L	36 Pz	12 Pz
-----	-------	-------



JERSEY

IT613T



Canottiera donna back longer

100% Cotone Pettinato Ring Spun
140 gr/m²
Cuciture laterali
Collo stesso tessuto della maglia

99 Bianco	12 Nero
RP Rosa Polvere	02 Grigio Perla

S-XL	36 Pz	12 Pz
------	-------	-------



MODAL

IT683



Canottiera donna Modal back longer taglio vivo

50% Cotone - 50% Modal
110 gr/m²
Tessuto leggero e morbido
Finiture taglio vivo sul bordo
Spacchi laterali e lunghezza posteriore maggiore
Etichetta asportabile manualmente

12 Nero	99 Bianco	FN Fango
------------	--------------	-------------

S-XL	36 Pz	12 Pz
------	-------	-------

BELLA+CANVAS
LOS ANGELES

FLOWY

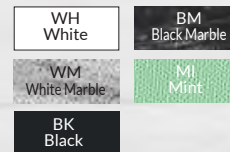


B8803



**Flowy Scoop Muscle
canottiera**

65% Poliestere
35% Viscosa
125 gr/m²



Colori Marble: 91% poliestere
9% Cotone pettinato Ring Spun 119 gr/m²

S-XL 72 Pz 6 Pz



B8802



**Flowy canottiera con spacchi laterali
scollatura ampia**

65% Poliestere
35% Viscosa
125 gr/m²



S-XL 72 Pz 6 Pz

FLOWY

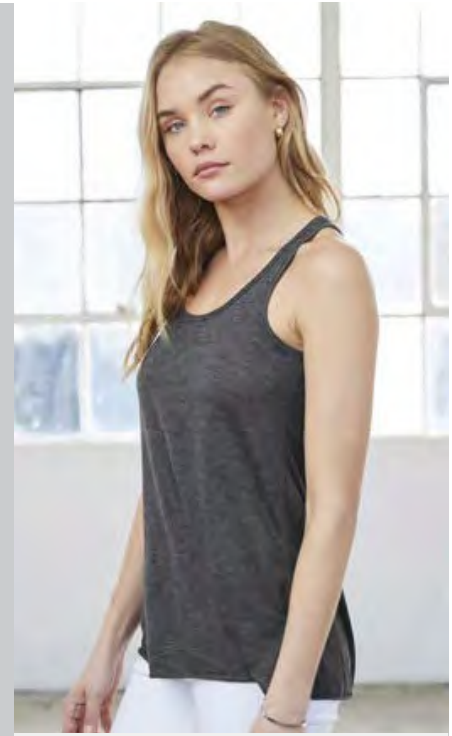
B8809



Flowy canottiera collo alto
65% poliestere - 35% viscosa
125 gr/m²
Cucitura posteriore centrale
Vestibilità comoda

WH White	DG Dark Grey Heather
BK Black	HT Heather Stone

S-XL 72 Pz 12 Pz



B8880



Boxy Flowy canottiera
65% Poliestere - 35% Viscosa
125 gr/m²
Modello corto in vita

WH White	TR True Royal
BK Black	NW Neon Yellow
NP Neon Pink	

S-L 72 Pz 6 Pz



B8800





Flowy canottiera
65% Poliestere - 35% Viscosa - 125 gr/m²
Modello racerback spalle scoperte
Bordo a taglio vivo

WH White	PN Pebble Brown	MRD Red Marble
BK Black	MI Mint	WM White Marble
SP Soft Pink	NW Neon Yellow	DG Dark Grey Heather
TR True Royal	NP Neon Pink	
CL Coral	MBL Blue Marble	




Colori Marble: 91% Poliestere
9% Cotone pettinato Ring Spun - 119 gr/m²

S-XL 72 Pz 6 Pz



B8430 

Triblend canottiera racerback
 50% Poliestere - 25% Rayon
 25% Cotone pettinato Ring Spun
 128 gr/m²

		
CE Charcoal Triblend	EH Emerald Triblend	GH Grey Triblend

*Tessuto melange
 Finiture a taglio vivo cucite a doppio ago
 Linea trendy e sensuale*


S-XL	72 Pz	6 Pz
------	-------	------

TRIBLEND






POLY - COTTON

BELLA + CANVAS
 LOS ANGELES


B1080 

Rib-T canottiera
 100% Cotone pettinato Ring Spun 30/1 - 195 gr/m²
 Modello sagomato Fashion Fit
 Tessuto in costina 1x1 super soft





		
WH White	BK Black	CH Chocolate

S-XL	72 Pz	6 Pz
------	-------	------

RIB - T

B6682 

Poly-Cotton canottiera corta
 52% cotone ring spun - 48% poliestere
 125 gr/m² - Racerback
 Scollo manica ampio

	
WH White	HO Heather Olive
	
BK Black	HV Heather Mouve

S-XL	72 Pz	12 Pz		
S	M	L	XL	
↔	49,5	50,8	55,9	61,0
↓	41,3	45,1	49,5	54,6

BELLA+CANVAS
LOS ANGELES

JERSEY



B3480



Unisex Jersey canottiera

100% Cotone pettinato Ring Spun
142 gr/m²



Colori Triblend: 50% Poliestere -
25% Rayon 25% Cotone pettinato Ring Spun - 128 gr/m²
Colore Athletic Heather: 10% Poliestere
Colori Neon: 48% Poliestere 52% Cotone - 122 gr/m²

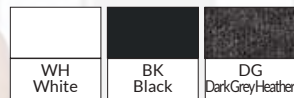
XS-XL 96 Pz 6 Pz

B3483



Men Jersey Muscle tank canottiera

100% Cotone pettinato Ring Spun
142 gr/m² - Cuciture laterali



Colore Dark Grey Heather:
48% Poliestere

S-XXL	72 Pz	6 Pz		
S	M	L	XL	XXL
↔ 45,5	51	55	60	65
↓ 66,0	68,5	71	73,5	76

B6488



Relaxed jersey tank canottiera

100% Cotone pettinato Ring Spun
142 gr/m² - Cuciture laterali
Relaxed fit



Colore Dark Grey Heather:
48% Poliestere

S-XL	48 Pz	6 Pz	
S	M	L	XL
↔ 43	47	52	57
↓ 64	65,5	67,5	69

American Apparel



JERSEY

N2408W



Fine Jersey canottiera unisex
100% cotone pettinato ring spun
146 gr/m²



Z00
White



Z32
Navy



835
New Silver



Z36
Black



Z63
Red



876
Asphalt

S-XL	36 Pz	12 Pz
S M L XL		
↔ 45,7 50,8 55,9 61		
↓ 71,8 74,3 76,8 79,4		



N408W



Sublimation canottiera unisex
100% poliestere
152 gr/m²

Z00
White



SUBLIMATION

XS-XL	36 Pz	12 Pz
XS S M L XL		
↔ 44,5 48,3 52,1 55,9 59,7		
↓ 71,8 74,3 76,8 79,4 81,9		

American Apparel

TRIBLEND



NT408W



Tri-Blend canottiera unisex
50% cotone - 25% poliestere - 25% rayon
125 gr/m²

880
Athletic Blue

851
Tri-Black

881
Athletic Grey

854
Tri-Cranberry

XS-XL	36 Pz	12 Pz
XS S M L XL		
↔ 39,4 43,2 47 50,8 54,6		
↓ 69,9 72,4 74,9 77,5 80		



NT308W



Tri-Blend women canottiera
racerback
50% cotone - 25% poliestere
25% rayon
125 gr/m² Racerback

880
Athletic Blue

851
Tri-Black

881
Athletic Grey

854
Tri-Cranberry

XS-L	36 Pz	12 Pz
XS S M L		
↔ 33 35,6 38,1 40,6		
↓ 65,4 66,7 68,6 69,9		